



Australian
BORDER FORCE

Detections of asbestos in imported goods

The following images are examples of imported goods which were subjected to sampling and testing at the border, and subsequently found to contain asbestos. The *Country shipped from* is the country the goods were supplied from to Australia. For some of the vehicle examples, this does not reflect the original country of manufacture.

Building products

Building products containing mineral raw materials may be a risk. Ensure the manufacturer uses synthetic materials or has a robust risk management process to ensure asbestos is not in the mineral raw materials.

1. Chrysotile Asbestos detected in outer layers (fibre board) of goods described as Expanded Polystyrene Sandwich panels, intended for use as wall panels. Country shipped from: China



Arrow indicates the fibre board with asbestos.

Some composite cements in these types of panels can also be a risk for asbestos.

2. Chrysotile asbestos detected in cement fibre boards. Country shipped from: China



Debris from the boards was present on the container floor.

3. Chrysotile asbestos detected in cement fibre boards, shipped as part of a prefabricated house kit.
Country shipped from: China



Arrow indicates outer section of cement fibre board containing asbestos.

4. Chrysotile asbestos detected in cement fibre boards, shipped with other building goods. Country shipped from: China



5. Chrysotile asbestos detected in cement fibre boards, shipped as part of a prefabricated house kit.
Country shipped from: China



Boards visibly contain fibre material



6. Chrysotile asbestos detected in cement fibre boards, shipped as part of a prefabricated house kit.
Country shipped from: China



Images courtesy of Occuhealth Pty Ltd

Cut stone

Certain cut stone products, such as some marbles containing serpentinite minerals, are a risk for naturally occurring asbestos (NOA) from the source quarry. If NOA is present, the quantity may vary throughout any cut slabs or tiles in a consignment. Some may have no asbestos, others may have varying percentages.

7. Naturally occurring chrysotile asbestos detected in mineral slabs described as Radasthan green and brown marble. Country shipped from: India.



Arrows indicate the locations the samples were taken from for testing.

8. Naturally occurring chrysotile asbestos detected in mineral slabs described as Rain Forest Green marble. Country shipped from: India.



Slabs



Location of sample on slab



Images courtesy of Asbestex Consulting Pty Ltd

Sample obtained. Chrysotile asbestos was present in the green ore throughout the sample.

9. Naturally occurring chrysotile asbestos and actinolite asbestos in mineral slabs described as China Jade Green marble. Country shipped from: China.

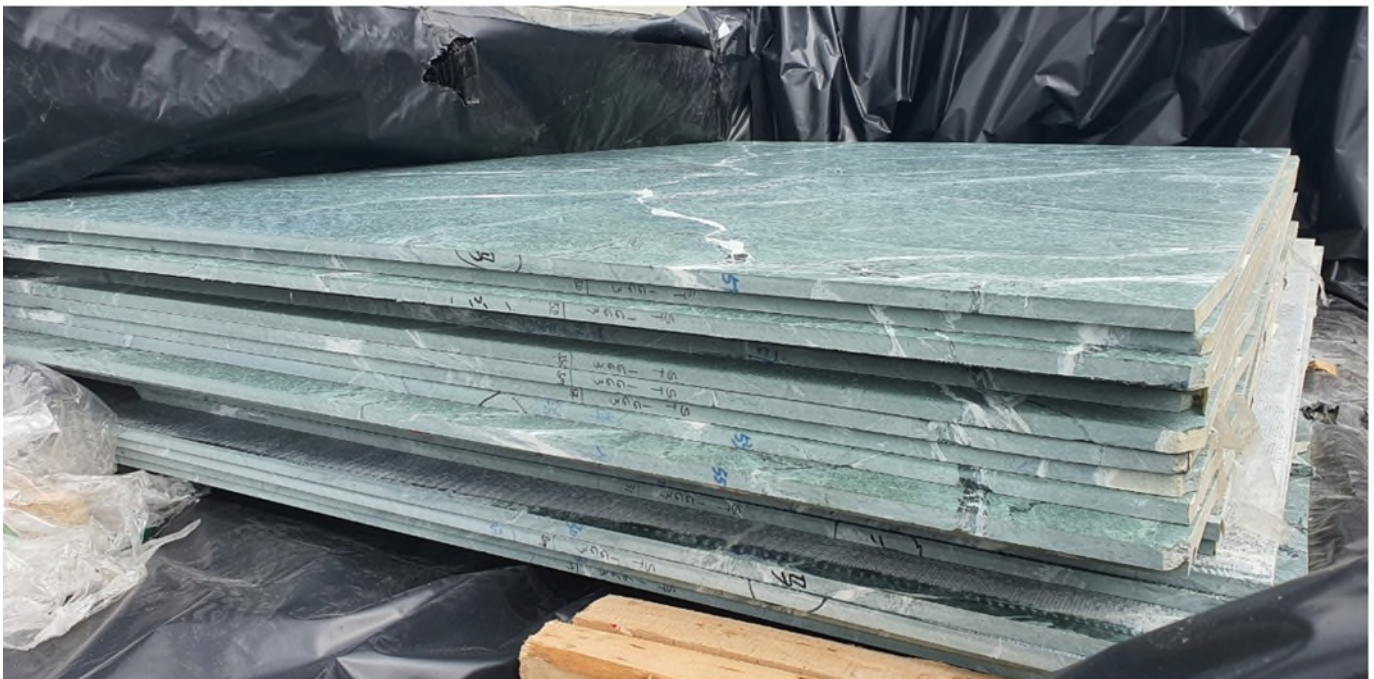


Image courtesy of Advanced Deconstruction

10. Naturally occurring chrysotile asbestos in mineral slabs described as Ice Green Marble and Jade Green Marble. Country shipped from: China.



Vehicles and vehicle parts

Older vehicles, even older luxury vehicles, are more likely to have parts and components manufactured with asbestos due to original equipment manufacturer parts with asbestos designed to resist heat and wear that was used at the time.

Maintenance may have recently introduced asbestos into the vehicle through new after-market parts manufactured in a country that uses asbestos (not necessarily where the vehicle is shipped from).

11. Chrysotile asbestos detected in the brake pads of a 1973 DeTomaso Pantera.
Country shipped from: USA



12. Chrysotile asbestos detected in the clutch plate of a 1969 Ford Mustang.
Country shipped from: USA.



13. Chrysotile asbestos detected in bituminous coating painted on to the floor pan of a 1947 Hudson Commodore. Country shipped from: USA



14. Chrysotile asbestos detected in bituminous layer in boot and underbody of a 1956 Buick Century. Country shipped from: USA.



15. Chrysotile asbestos detected in a 1979 Pontiac Firebird: rear brake shoes and bituminous material used as an air conditioner seal and insulation. Country shipped from: USA



16. Chrysotile asbestos detected in the rear window seals of a 1938 Ford truck cabin.
Country shipped from: USA



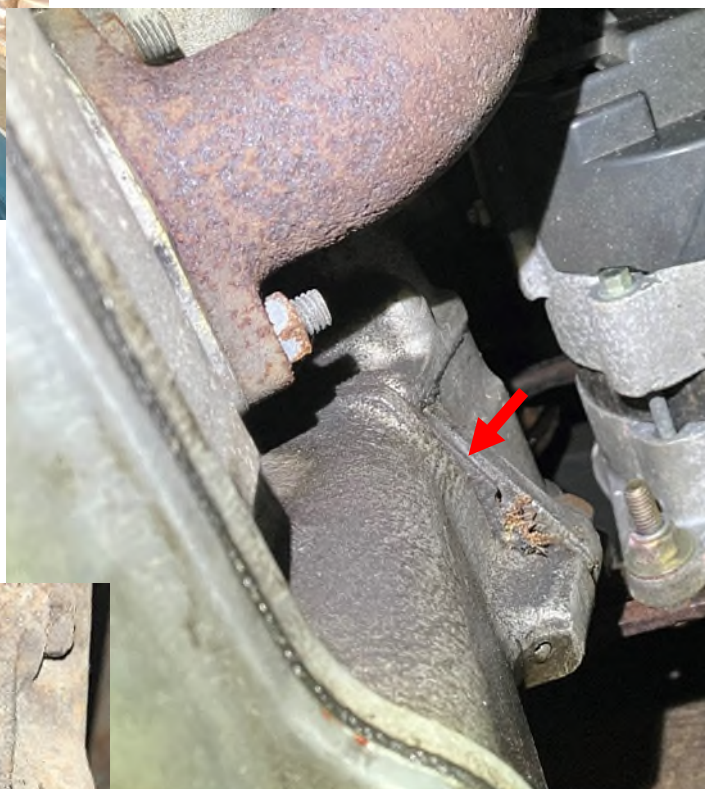
Image courtesy of Asbestex Consulting Pty Ltd

17. Chrysotile asbestos detected in 1965 Alfa Romeo Giulia Ti. Country shipped from: United Kingdom.

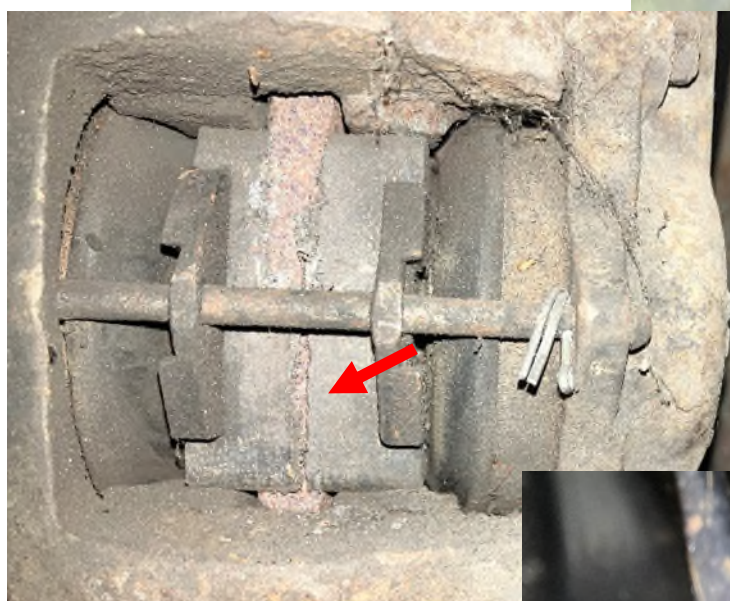
Images courtesy of iRisC Pty Ltd



Under-bonnet insulation



Head gasket

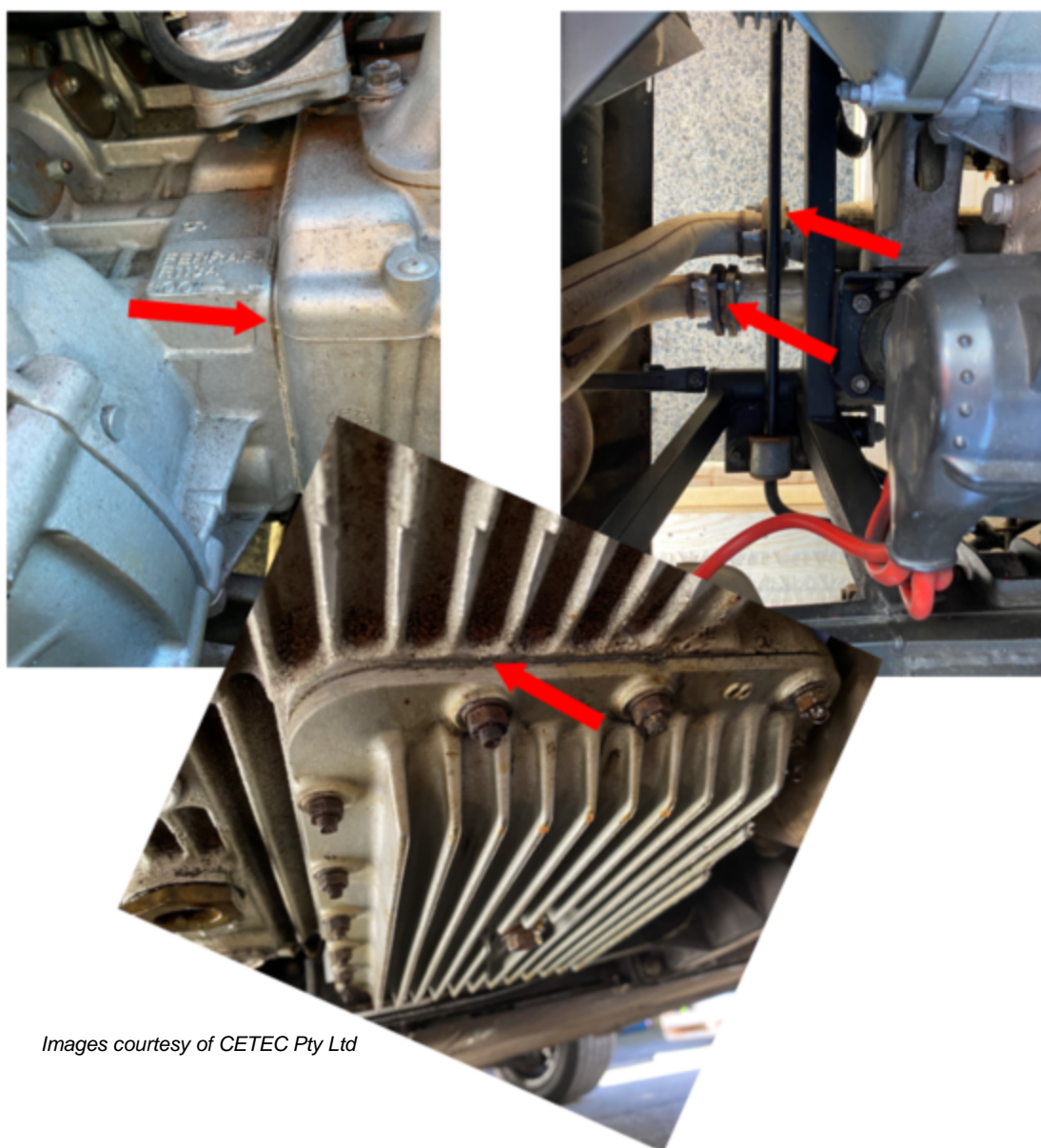


Friction material in brake pads



Inlet manifold gasket

18. Chrysotile asbestos detected in various gaskets of 1986 Ferrari Testarossa.
Country shipped from: United Kingdom.



Images courtesy of CETEC Pty Ltd

19. Chrysotile asbestos in after-market acoustic padding (sound deadening) under seats and within a bituminous mastic painted onto the boot, of used 1975 Nissan Fairlady Z (known in Australia as Datsun 240Z). Country shipped from: Japan.



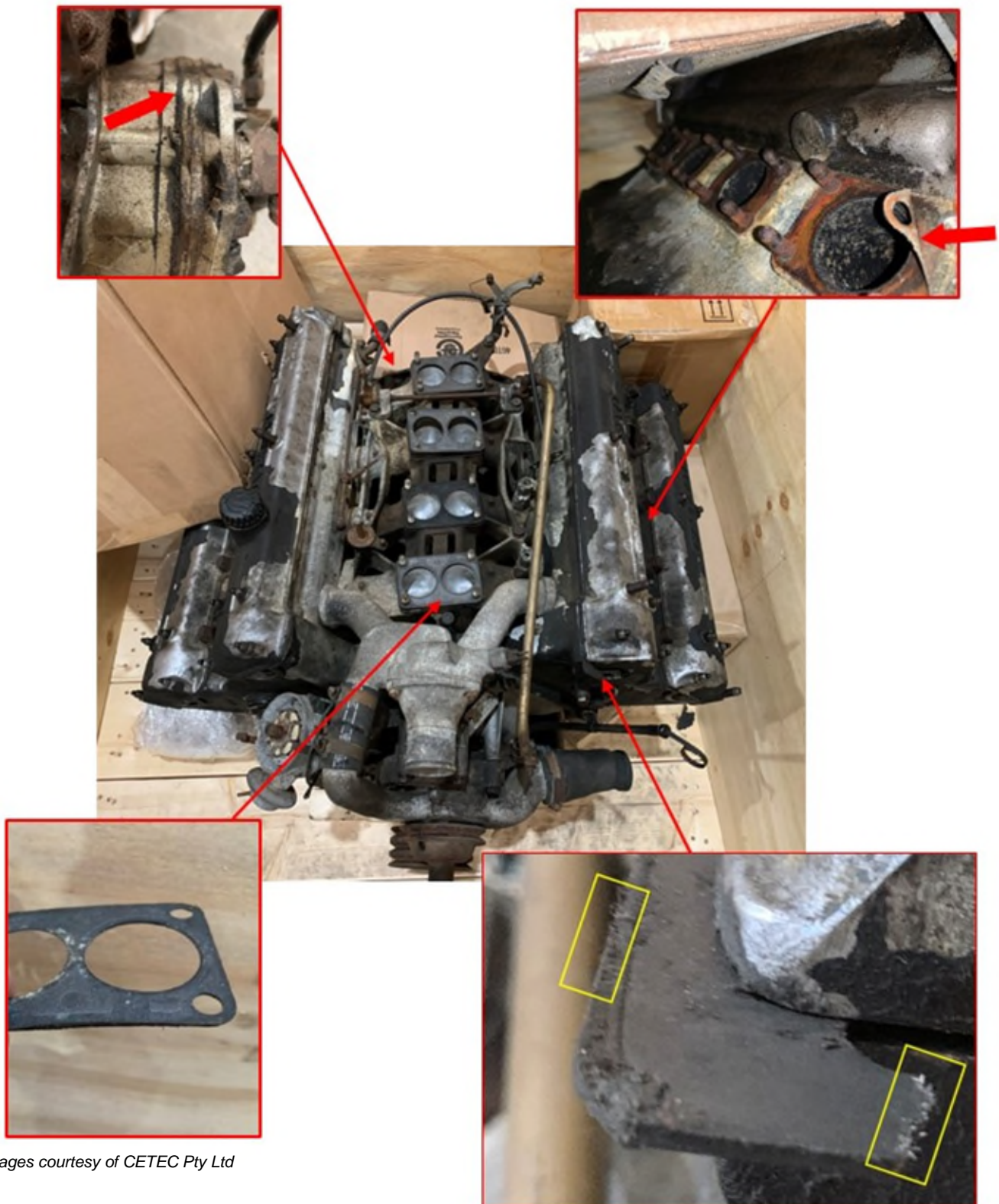
Acoustic padding

Images courtesy of JMB Environmental Consulting Pty Ltd



Bituminous mastic painted onto interior of boot

20. Chrysotile asbestos in gaskets within used Maserati Quattroporte III 4.9L V8 Engine.
Country shipped from: United Kingdom.



Images courtesy of CETEC Pty Ltd

Visible fibres indicated

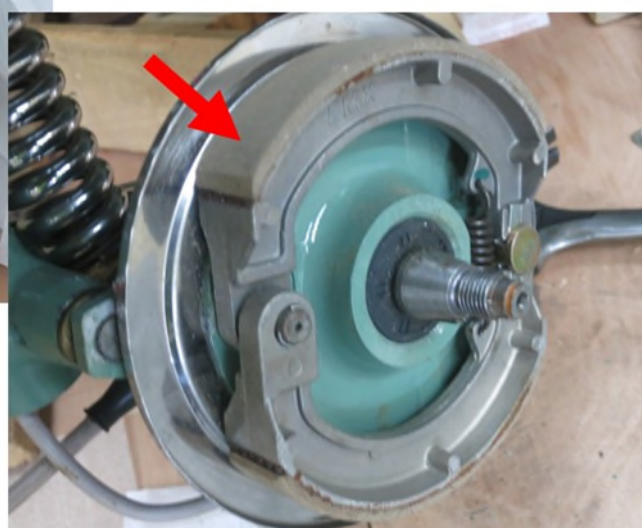
21. Chrysotile asbestos detected in brake shoes of new 'Electric Bicycles' which had the appearance of motor scooters. Country shipped from: China.



22. Chrysotile asbestos detected in brake pads of new 'Electric Bicycles' which had the appearance of motor scooters. Country shipped from: China.



23. Chrysotile asbestos detected in new brake shoes of reconditioned used Vespa motor scooters.
Country shipped from: Vietnam



24. Chrysotile asbestos detected in brake drums, brake pads and caliper brake of a used Kawasaki motorcycle. Country shipped from: South Africa



Images courtesy of Property Risk Australia Pty Ltd

25. Chrysotile asbestos detected in consignment of new after-market disc brake pads. Country of manufacture and shipped from: China.



Images courtesy of Asbestex Consulting Pty Ltd



Gaskets and gasket materials

Gaskets designed to resist heat or moisture, manufactured in countries that use asbestos, are a risk. After-market parts should be sourced from reputable sellers that are sourcing from manufacturers that have a consistent and robust risk management process for asbestos, or actively use asbestos-substitute materials in production. After-market parts are often sourced from risk countries but shipped from countries that have asbestos bans in place.

26. Chrysotile asbestos detected in after-market gasket for industrial 500HP mud pump. Country shipped from: China.



27. Chrysotile asbestos detected in after-market gaskets for use within construction plant components: Steering Case Cover and Part the Brake Piping with brake assistor. Both gaskets are compatible with a number of Komatsu and Shantui construction plant models. Country shipped from: China.

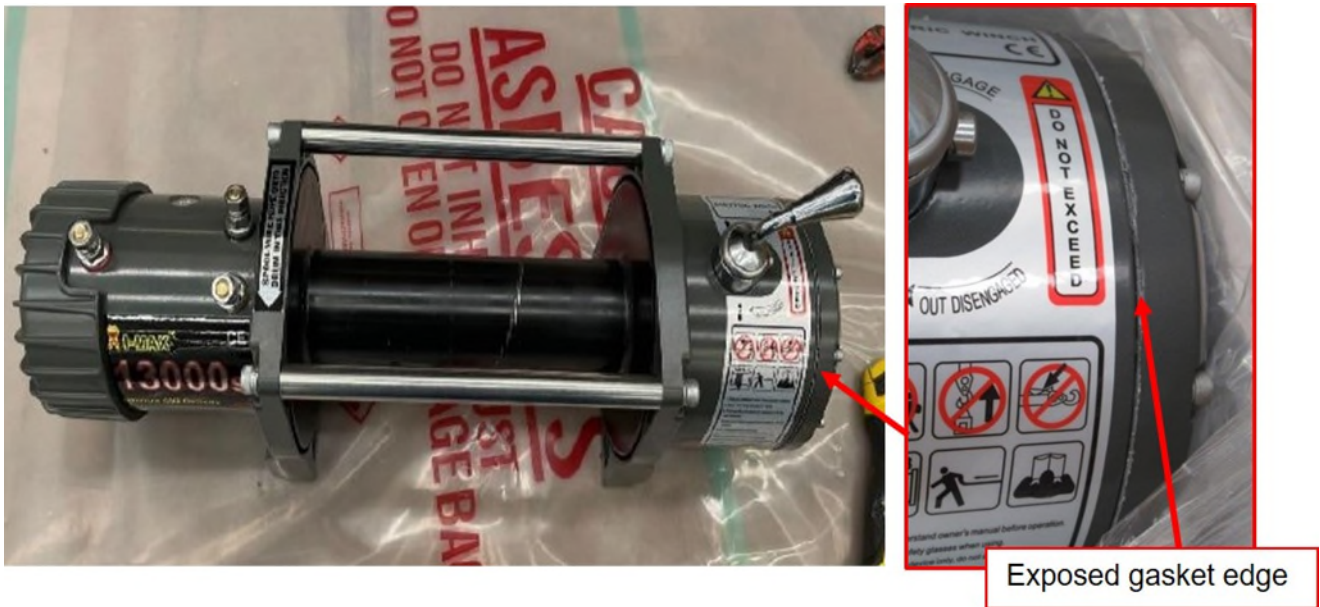


After-market gasket 144-33-21340 with manufacturer markings



Aftermarket gasket 144-40-22220

28. Chrysotile asbestos detected in gasket seal for electric winch designed for 4WDs and boats.
Country shipped from: China.



Images courtesy of Asbestex Consulting Pty Ltd

Other goods

29. Chrysotile asbestos detected in woven material within the bellows component of manual bee smokers (used by bee keepers). Country shipped from: China.



Images courtesy of Agon Environmental